

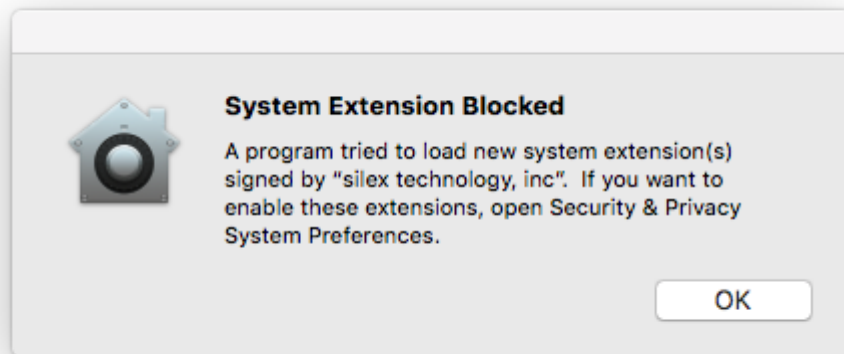
Attention: When you use SX Virtual Link in Apple OS X High Sierra (OS X 10.13) or later versions.

When you install a 3rd party kernel driver, the strengthened security of macOS Ver. 10.13 or later versions will stop the driver from starting with the pop-up message shown below.

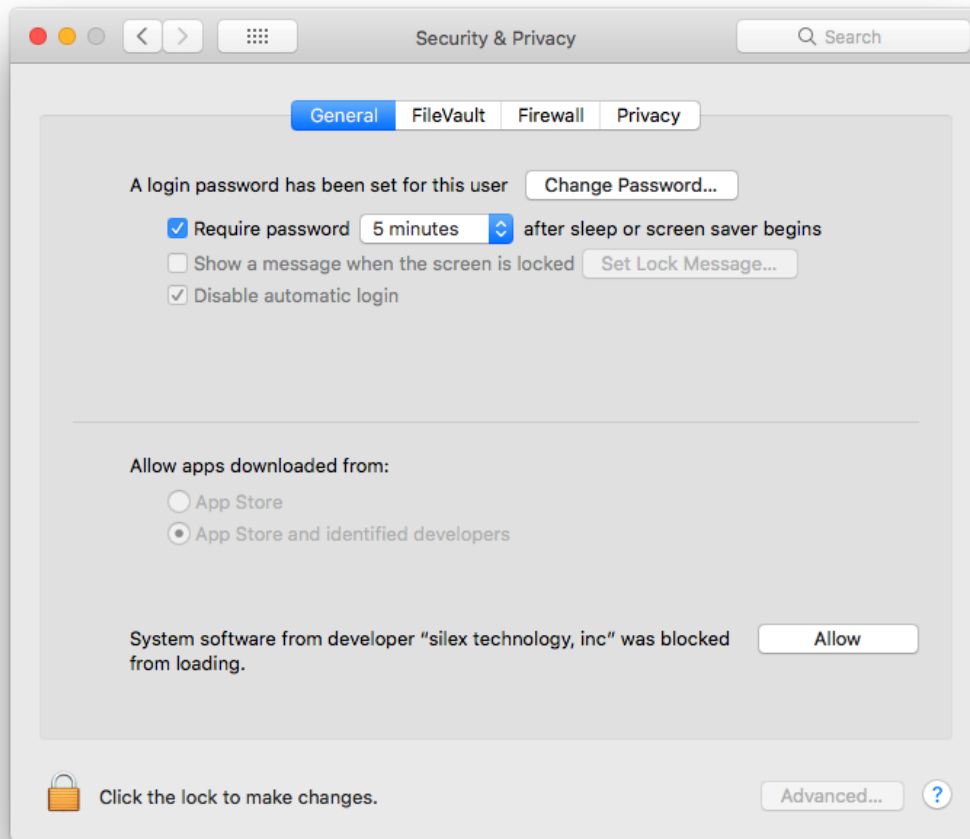
This is also the case for the SXUPTP driver for SX Virtual Link, and it will not allow you to use functions such as driver version retrieval or connecting a USB device. To allow the driver to start, please follow the procedure below.

Follow the procedure below to use the SX Virtual Link in macOS Ver. 10.13 or later versions:

1. Upon installing the SX Virtual Link, you will see the following message.



2. Open the System Preferences, go to the Security & Privacy, and click on the Allow button to allow loading.



*Once the driver has been allowed to load, it will not be blocked again even if it is reinstalled.

*With the SX Virtual Link already installed, the driver will not be blocked even if the OS is upgraded

Thank you.