

Wireless Adapter SX-WSG1 Support Guide

This Support Guide describes the "Camera Direct Transfer" feature and how to enable it.

Camera Direct Transfer

By connecting SX-WSG1 to a Digital Photo Printer that supports Camera Direct Transfer, the image data can be directly transferred and then printed from the digital camera to the Digital Photo Printer via FTP.

- * Only one Digital Photo Printer can be connected at a time.
- * To use this function, Camera Direct Transfer mode needs to be selected for the Extended Function setting.
(Default Extended Function setting: Camera Direct Transfer)

Wireless print directly from a digital camera without using a PC

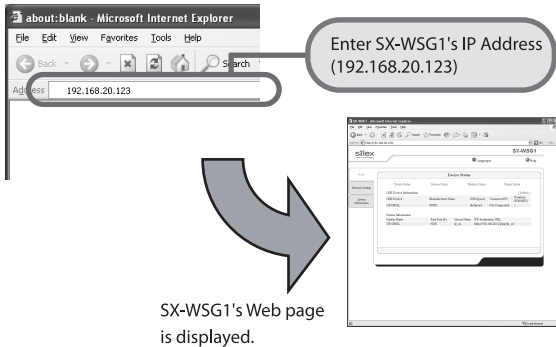
For a direct wireless print from a digital camera to a Digital Photo Printer without using a PC, you need to change the settings on SX-WSG1 and your digital camera. For details on how you can change the settings on your digital camera as well as its supported model information, please visit the website below.

SONY's website at <http://www.sony.net/snaplab>

Check SX-WSG1 current settings

1. Access the SX-WSG1's Web page.
Enter the IP address that is configured to SX-WSG1 into the address bar of a Web browser and press the ENTER key.

Example) If the IP address of SX-WSG1 is 192.168.20.123 :



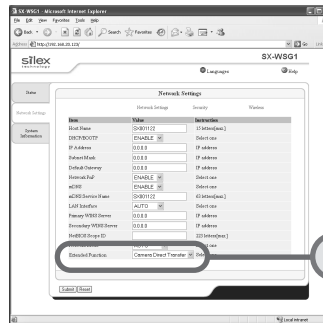
2. Click the **Network Settings** tab. The below window is displayed. Enter a user name and password and click **OK**.



User name : root
Password : SX-WSG1's password

* By default, no password is set.

3. Check that **Camera Direct Transfer** is selected for **Extended Function**.



- * If **Device Server** has been selected, change it to **Camera Direct Transfer** and click the **Submit** button.
SX-WSG1 will reboot itself and run in Camera Direct Transfer mode.

To use SX-WSG1 as a Device Server

To use SX-WSG1 as a device server, you need to change its settings.

Follow the same procedure as shown in **Check SX-WSG1 current settings**.

- (1) Select **Device Server** for **Extended Function** in step 3 .
 - (2) Click the **Submit** button.
- SX-WSG1 will reboot itself and then restart as a device server.

