

Step-by-step Guide for the Print Server Functionality

Congratulations! You have purchased a high quality product from silex technology. It enables you to network print and scan from your USB and Multi-Function printer. This quick setup guide helps you to configure the special Print Server Function. If you want to learn how to setup network scanning, please refer to the separate USB Device Server Setup Guide included in this package.

Before you begin, please install the following: Printer drivers, SX-Virtual Link* and perform the general setup of the device server (Please refer to the separate Device Server Setup Guide).

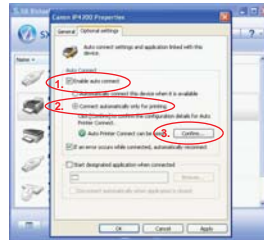
Step 1

- (1.) Start SX Virtual Link and select the printer you would like to use for the Print Server Functionality (auto-connection).
- (2.) Make a right click and choose the option "Properties" or click on the button "Property Option" in the lower left corner.



Step 2

- (1.) Click on "Enable auto connect,"
- (2.) select "Connect automatically" and then
- (3.) click on "Confirm".



Step 3

- (1.) Please confirm that the right printer is selected and
- (2.) click on "OK".



Step 4
(1.) Click on "OK"



Now you have successfully configured the Print Server Functionality. From now on, SX Virtual Link will automatically establish a connection to the printer once you send a print job to the selected network printer. After the print job was successfully transmitted, SX Virtual Link will disconnect automatically from the printer. This ensures that your printer is always ready to receive the next print or scan job from you or another network user.

silex technology europe GmbH provides various types of customer support. Please choose from:

Telephone support: +49 2159 675022

E-mail support: support@silexeurope.com

Web support: http://www.silexeurope.com

Remote online support is available upon request by telephone or e-mail.

*) SX Virtual Link version 3.x.x

silex technology is a registered trademark of silex technology, Inc. Other product or brand names may be registered trademarks or trademarks of their respective owners. Technical information and specifications are subject to change without notice. ©2009 silex technology europe GmbH All rights reserved.

silex global sales & support locations



Europe Office
silex technology europe GmbH
+49-2159-67500
German toll free 0800-7453938
www.silexeurope.com
contact@silexeurope.com

US Office
silex technology america, Inc.
+1-801-748-1199
US toll free 866-765-8761
www.silexamerica.com
contact@silexamerica.com

China Office
silex technology beijing, Inc.
+86-10-6440-3958
www.silex.com.cn
contact@silex.com.cn

Corporate Headquarters
silex technology, Inc.
+81-6-6730-3751
www.silex.jp
support@silex.jp