



Wireless/Wired USB Hi-Speed 11g Print Server Canon C-6700WG



Ideal for

Canon PIXMA Ink-Jet

Canon imageCLASS CAPT Laser printers

Canon PIXMA Multi-Function printers

Ideal for sharing Canon Multi-Function and USB printers



The C-6700WG provides convenience and flexibility to share your Canon Multi-function and USB-printer on a Wireless or Wired Local Area Network.

Like the rest of SILEXs C-Series products, the C-6700WG is developed in close association with Canon.

Enjoy all functions of your Canon printers over the network - as if they were locally connected.

Key features

- ⦿ Printing, scanning, memory card storing and PC fax over a Wireless Local Area Network or LAN
- ⦿ Compatible with most Canon Multi-Function and USB printers
- ⦿ Easy wireless configuration with Windows® Connect Now support
- ⦿ Canon printer status monitoring support

10/100 BASE-TX	WPA-PSK (TKIP/AES)	Bi-directional Communication with printer	USB Memory Stick config.		
MFP/AIO-Server	Print Server	Scanner Server	Storage Server	WEP & SSID	Internet Printing Protocol
1 USB-Port	Multi-language Support	Canon Status Monitor	USB 2.0 Hi-Speed	IEEE 802.11b/g Wireless	IP Filtering Enhanced Security

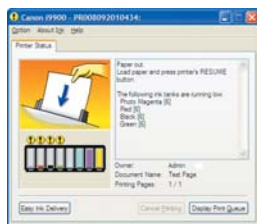
Ideal for sharing Canon Multi-Function and USB printers

Features and benefits

- Convert your Canon MFP and printers to a shared network resource**
 With the C-6700WG, you can remotely share a Canon USB MFP/printer over the network while at home with your family members or at the office with co-workers.
- Network printing, scanning, memory card sharing and PC fax.**
 The C-6700WG provides easy wireless network access with full functionalities of the compatible Canon device.
- Real-time Canon printer status monitoring support**
 The convenience of the Canon status monitoring function is available on the network as if it was locally connected to your PC. You can remotely monitor various defined printer operating conditions such as ink levels and paper empty on a real-time basis.



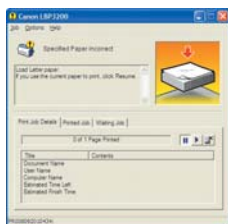
▲ Printing



▲ Ink cartridge empty/
Paper out



▲ Printing



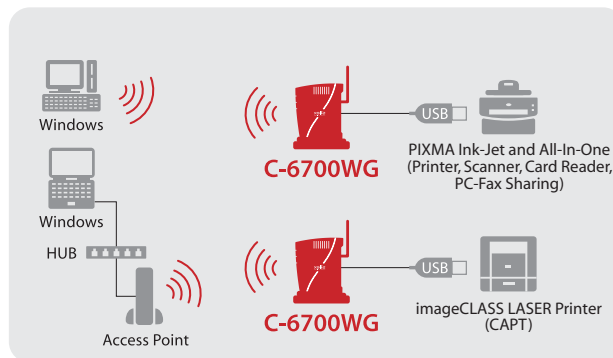
▲ Paper out

- Easy wireless configuration with Microsoft Windows Connect Now***
 The C-6700WG supports Microsoft Windows Connect Now. It simplifies the complicated wireless network initial configuration. The process is very easy. Use the Windows XP Connect Now wizard, save the results on your USB flash thumb drive, and then insert the thumb drive to the C-6700WG. It automatically creates the wireless configuration instantly. Alternatively, the C-6700WG can be configured over a wired LAN connection.

* Supported only with Windows XP Service Pack 2 or greater

- Advanced Wireless Security Support**
 64/128 WEP is supported as well as WPA-PSK (TKIP/AES) to securely print, scan or store your data over the wireless network.

Network diagramm



Specifications

Wireless LAN	IEEE 802.11b/g
Wireless Security	WEP (64/128bit), SSID, WPA-PSK (TKIP/AES)
Wired LAN	10Base-T, 100Base-TX (Auto Sense)
USB Interface	USB2.0 Hi-Speed (A type) x 1
Operating Systems*	Windows 95/98/Me, Windows 2000/XP, Windows Server 2003
Supported Protocols	TCP/IP
Configuration	Setup Utility, Web Setup, TELNET, Windows Connect Now
Outer Dimensions	W: 36mm x D: 114mm x H: 138mm W: 1.42 x D: 4.49 x H: 5.43 in (Antenna and Stand not included)
Weight	172g / 5.55 oz (Antenna and Stand not included)
Power	AC Power Adapter, AC100-240V 50/60Hz
Power Consumption	Max 9W (DC5V 1.8A)
Content	C-6700WG, AC Power Adapter, CD-ROM (Setup Utility, Manual) Setup Guide, Warranty Card, Stand, Antenna

* Network scanning, memory card reading and PC-Fax are available only for Windows 2000/XP.

Utility Software

Device Server Setup	Wizard style quick setup utility
CX Print	Client Software for Windows Printing
SX Virtual Link	For networking USB devices



JQA-QMA2667
silex technology, Inc.



JQA-EM3813
silex technology, Inc.
Design & Manufacture Center

Canon® is a registered trademark of Canon Inc. SILEX TECHNOLOGY is a registered trademark of SILEX TECHNOLOGY, Inc. Other company or product names may be trademarks or registered trademarks of their respective owners. Technical information and specifications are subject to change without notice. © 2008 SILEX TECHNOLOGY EUROPE GmbH. All rights reserved.

Global sales & support:



Europe Office
SILEX TECHNOLOGY EUROPE GmbH
 +49-2159-6750-10
 Cost-free Hotline Germany:
 0800-7453938 (SILEX EU)
 www.silexeurope.com
 > contact@silexeurope.com

Corporate Headquarters
SILEX TECHNOLOGY, Inc.
 +81-774-98-3782
 www.silex.jp
 > support@silex.jp

US Office
SILEX TECHNOLOGY AMERICA, Inc.
 +1-801-747-0656
 Cost-free Hotline USA:
 866-765-8761
 www.silexamerica.com
 > contact@silexamerica.com

China Office
SILEX TECHNOLOGY BEIJING, Inc.
 +86-10-8497-1430
 www.silex.com.cn
 > contact@silex.com.cn